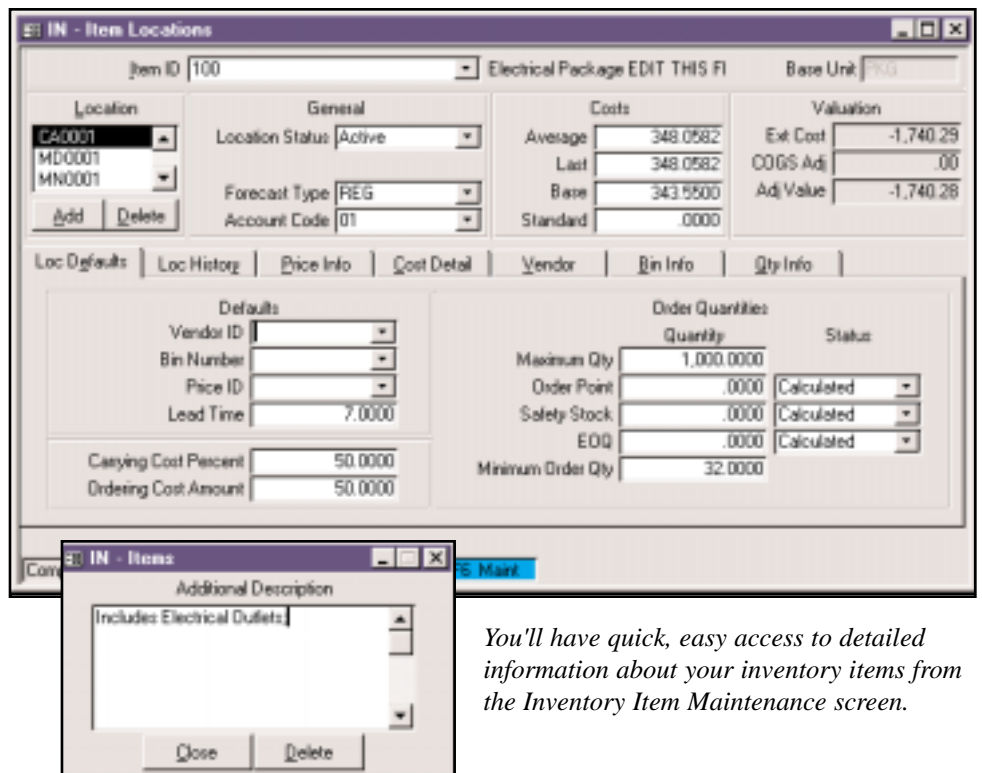


INVENTORY

Make a positive impact on your bottom line

You need to track every aspect of your inventory. You need to know what you have in stock, how much it's worth, and where it's located. You can do it with the TRAVERSE® Inventory application. TRAVERSE provides a seamless interface to Microsoft Office products as well as multilingual and multicurrency capabilities. Organizations running Windows 98, Windows 2000, Windows XP, Windows NT, and other leading systems will benefit from the great array of features TRAVERSE offers.

TRAVERSE lets you closely monitor inventory movements by tracking detailed inventory history; then, use the Inventory Movement Report to identify your best products and to understand their purchase/sales cycles. You can even spot seasonal demand patterns. The Valuation Report summarizes the value of the items you have on hand and the profit on items sold during the year. With TRAVERSE Inventory, you'll be able to make informed buying and selling decisions, improve customer service, and save money. Like all Open Systems products, source code is available.



The screenshot displays the 'IN - Item Locations' window for item 100, 'Electrical Package'. The window is divided into several sections:

- Location:** CA0001, MD0001, MN0001. Buttons: Add, Delete.
- General:** Location Status: Active, Forecast Type: REG, Account Code: 01.
- Costs:** Average: 348.0582, Last: 348.0582, Base: 343.5500, Standard: .0000.
- Valuation:** Exit Cost: -1,740.29, COGS Adj: .00, Adj Value: -1,740.28.
- Defaults:** Vendor ID, Bin Number, Price ID, Lead Time: 7.0000, Carrying Cost Percent: 50.0000, Ordering Cost Amount: 50.0000.
- Order Quantities:** Maximum Qty: 1,000.0000, Order Point: .0000, Safety Stock: .0000, EOQ: .0000, Minimum Order Qty: 32.0000. Status: Calculated.

An 'Additional Description' dialog box is open, showing the text 'Includes Electrical Outlets'.

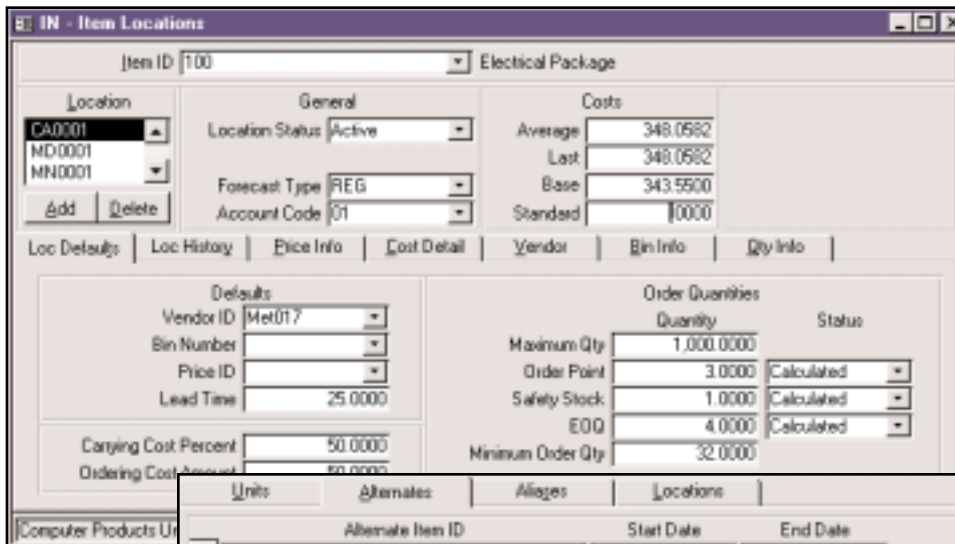
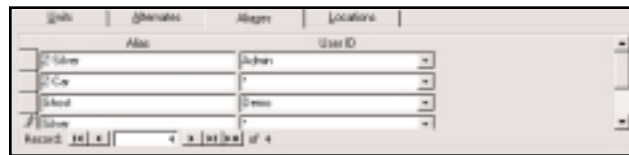
You'll have quick, easy access to detailed information about your inventory items from the Inventory Item Maintenance screen.

Additional Inventory Features:

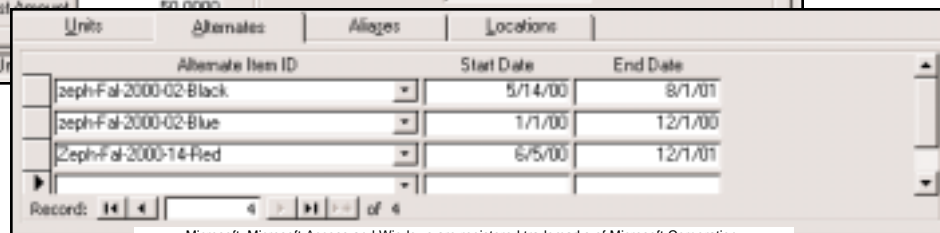
- mouse and/or keyboard navigation and data entry
- export reports to Word, Excel, and Mail or HTML
- international reporting
- receipts posted online
- quick access to detailed descriptions for each item
- alternate item options
- aliases for inventory item numbers
- process by worksheet or tags
- ability to select a group of items for cycle count
- freeze quantities while processing continues
- multiple tag numbers
- exception-only entry
- defaulting count quantity
- unit & measure conversions
- flexible cost valuation feature
- multiple warehouse capabilities
- lot tracking
- quantity breaks
- user-defined fields
- sort options
- quick lookup on aliases, lot numbers, and serial numbers
- material requisitions
- user-defined color settings for reports and credit warnings

Inventory Reports:

- Item Status Report
- Safety Stock Alert Report
- Price Report
- Valuation Report
- GL Adjustments Journal
- Transactions Journal
- Serialized History Report
- Sales Analysis Report
- Physical Inventory Variance Report
- Physical Inventory Worksheets
- Overstock Report
- Trend Analysis Report
- Slow/Fast Movement Report
- Inventory Movement Report
- Cost Variance Report
- Lot History Report
- Gross Profit Analysis Report
- Transaction History Report
- Transfers Journal
- Material Requisitions Journal
- Backorder Allocations Report



Alternates and Aliases provide flexible, easy ways to look up inventory items.



Microsoft, Microsoft Access and Windows are registered trademarks of Microsoft Corporation. TRAVERSE is a registered trademark of Open Systems, Inc.